



RODINNÝ DOMEK

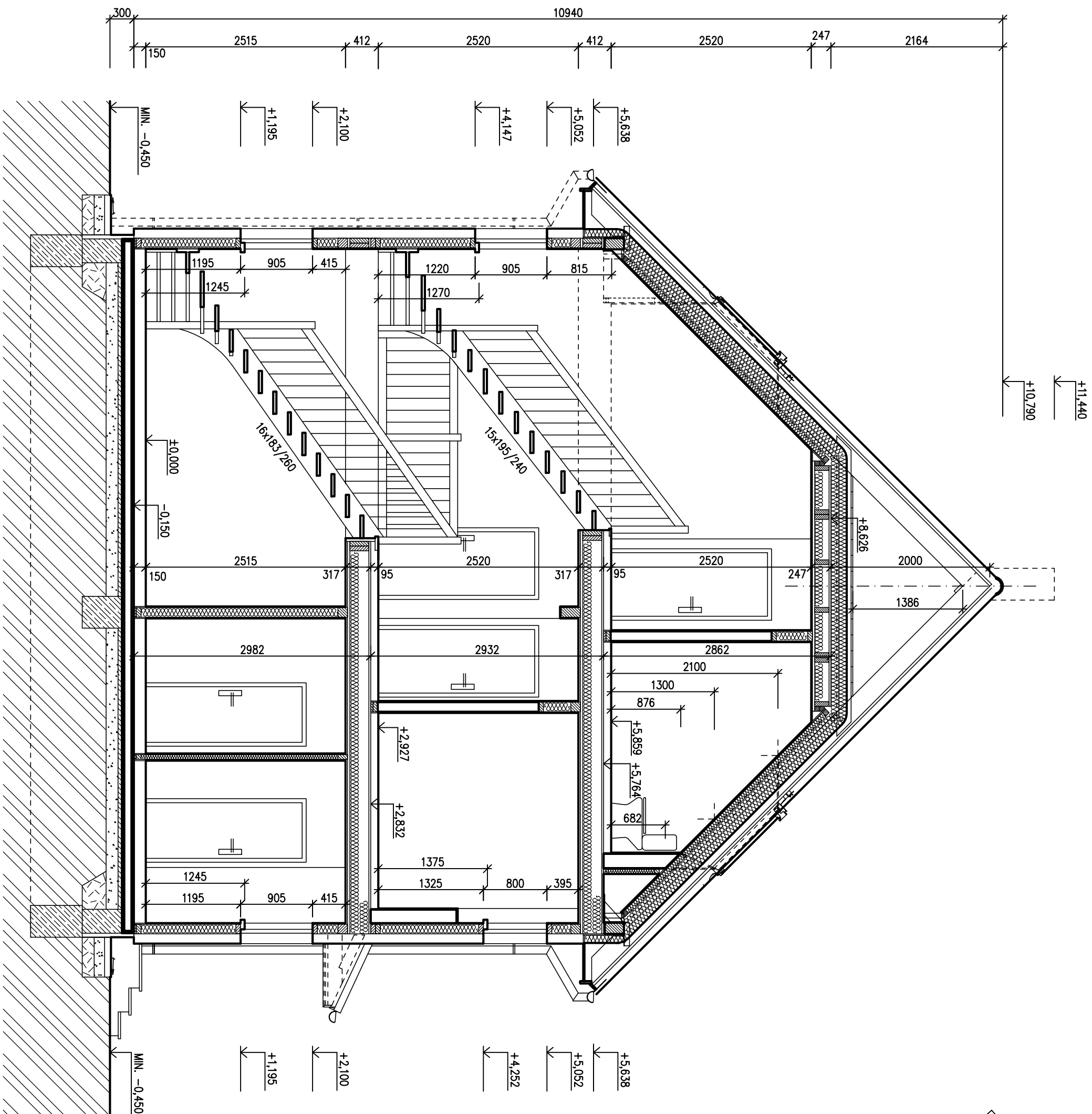
ŘADOVÉ DOMY/45° - P

(RD BEZ PODSKLEPENÍ)







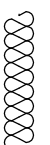
VARIANTA C1-1


ŘEZ A - A

M 1:50



LEGENDA MATERIÁLU

-  ROSTLÝ TERÉN
-  ŠŤĚRKOVÝ NÁSYP
-  ZÁSYP
-  ŽELEZOBETON
-  PROSTÝ BETON
-  DŘEVO
-  TEPelná IZOLACE

Autorizovaný inženýr Ing. Zdeněk Chromý Ing. David Ondra		Zpracovatel 	
Odpovědný projektant Ing. David Ondra		Projekt	
Vpracoval Jiří Švehla		Datum: 9.03.2012	
Investor - stavitel Řádkové domy, Stará Boleslav		Číslo HS: -	

SPODNÍ STAVBA
DODÁVKA ODBĚRATELE